



AMK Commercial Series

## PLW 74

Self amplified satellite speaker  
(Preliminary Specification)

16761 146<sup>th</sup> Street, SE, Suite. 141, Monroe, WA 98272

Phone: (360) 805-1225 Fax: (877) 721-6107

info@amkspeaker.com www.amkspeaker.com



The AMK PLW74 self amplified satellite speaker is designed for full range and high output. Uniquely constructed to accommodate a full range of frequencies, the AMK PLW satellite speaker system accurately reproduces the musical characteristics of original-artist recordings.

The systems is compact and unobtrusive, and is designed to encompass any environment with consistent, uniform sound coverage. The speaker can be installed in a variety of configurations to suit any floor plan and interior floor.

The self amplified speaker feature 15 watt class D digital design amplifier, with > 75% efficiency.

The satellite speakers comes with AMK SB35B (W) mounting brackets. The SB35 brackets are omni directional which makes the installers easily point the direction of the speaker where ever it is required.

### Transducer Specifications

Frequency Response	65 Hz – 22 kHz
Average Beamwidth @ 2 kHz	110 deg.
Magnet Weight	13 oz
Magnet Material	Barium Ferrite
Tweeter	13mm Polyamide Soft Dome
Woofer Type	3" full Range
Woofer Cone	Paper
Surround Material	Inverted Rubber
Crossover Frequency	100 and 4 kHz

### Enclosure Specifications

(Enclosure listed under <b>UL 94</b> )	
Enclosure	Acrylonitrile Butadiene Styrene (ABS)
Height	7"
Width	3.5"
Depth	4"
Bracket	Omni-directional mount.
Grille	Perforated Metal
Weight	2.0 lbs

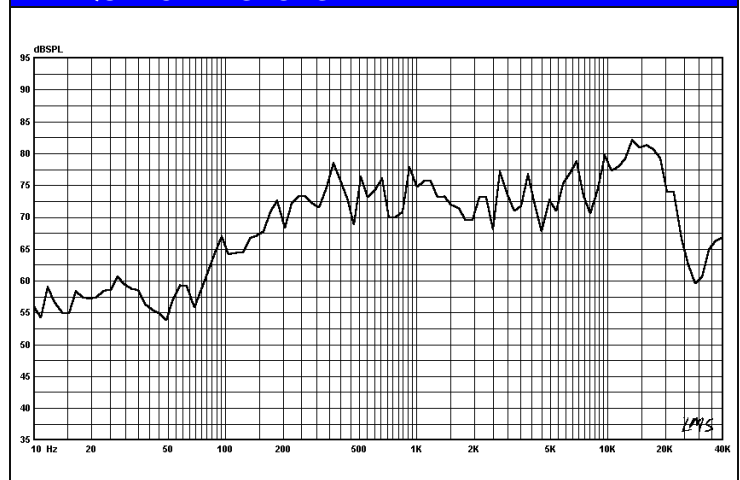
### Amplifier Specifications

Amplification	15 watt Class D design amplifier
Amplifier Efficiency	> 75%
Total Harmonic Distortion	< 0.2%
Signal to Noise Ratio	>95dB
Protection	Short circuit to supply and ground, as well as under current
Controls	Input potentiometer level adjustment

### FEATURES







- ◆ System reproduces crisp, clear sounds with an accurate and full range of frequencies for the best representation of original-artist recordings
- ◆ Compact speakers offer various mounting options that will work with any floor plan, ensuring seamless sound coverage without detracting from interior décor
- ◆ Easy installation saves you time and reduces costs:
- ◆ Constructed to deliver the prominent sounds of any music service, this commercial-quality systems is designed specially for the business environment

### FREQUENCY RESPONSE



# MODEL OPTION CONFIGURATIONS

S

<p style="text-align: center;"><b><u>PLW74-SM</u></b> Stereo to Mono unbalanced</p> <p>Two RCA phono jacks (stereo to mono unbalanced)</p> <p>2.5 N jack for 12volt 1.5A power input</p> <p>Input level adjustment</p> <p>Two screws for the KB100 bracket mount.</p>  <p>The speaker comes with one 2.5 mm plug power supply. This is to be used for side or floor outlet.</p>	<p style="text-align: center;"><b><u>PLW74-OM</u></b> One unbalanced input</p> <p>One RCA phono jacks (One unbalanced input)</p> <p>2.5 N jack for 12volt 1.5A power input</p> <p>Input level adjustment</p> <p>Two screws for the KB100 bracket mount.</p>  <p>The speaker comes with one 2.5 mm plug power supply. This is to be used for side or floor outlet.</p>
<p style="text-align: center;"><b><u>PLW74-RPS</u></b> Stereo to Mono unbalanced</p> <p>Two RCA phono (Stereo to mono unbalanced)</p> <p>3.81mm two position Phoenix type connector for 12volt 1.5A power input</p> <p>Input level adjustment</p> <p>Two screws for the KB100 bracket mount.</p>  <p>The speaker comes with one screw mount power supply with the eyebolt for securing power supply to the outlet.</p>	<p style="text-align: center;"><b><u>PLW74-RPM</u></b> One unbalanced input</p> <p>One RCA phono jack (One unbalanced input)</p> <p>3.81mm two position Phoenix type connector for 12volt 1.5A power input</p> <p>Input level adjustment</p> <p>Two screws for the KB100 bracket mount.</p>  <p>The speaker comes with one screw mount power supply with the eyebolt for securing power supply to the outlet.</p>
<p style="text-align: center;"><b><u>PLW74-EPS</u></b> Stereo to Mono unbalanced</p> <p>3.81mm 4 position Phoenix type connector (stereo to mono unbalanced)</p> <p>3.81mm two position Phoenix type connector for 12volt 1.5A power input</p> <p>Input level adjustment</p> <p>Two screws for the KB100 bracket mount.</p>  <p>The speaker comes WITHOUT a power supply. User has an option for power source.</p>	<p style="text-align: center;"><b><u>PLW74-EPM</u></b> One unbalanced input</p> <p>3.81mm 3 position Phoenix type connector (One balanced input)</p> <p>3.81mm two position Phoenix type connector for 12volt 1.5A power input</p> <p>Input level adjustment</p> <p>Two screws for the KB100 bracket mount.</p>  <p>The speaker comes WITHOUT a power supply. User has an option for power source.</p>

# MODEL OPTION CONFIGURATIONS

## PLW74-JFS Stereo to Mono unbalanced

3.81mm 4 position  
Phoenix type connector  
(stereo to mono unbalanced)

2.5 N jack for  
12volt 1.5A  
power input

Input level adjustment

Two screws for the  
KB100 bracket mount.



The speaker comes with  
one 2.5 mm plug power  
supply. This is to be used  
for side or floor outlet.

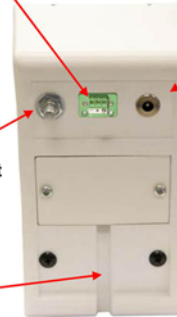
## PLW74-JFM One balanced input

3.81mm 3 position  
Phoenix type connector  
(One balanced input)

2.5 N jack for  
12volt 1.5A  
power input

Input level adjustment

Two screws for the  
KB100 bracket mount.



The speaker comes with  
one 2.5 mm plug power  
supply. This is to be used  
for side or floor outlet.

## PLW74- CFS Stereo to Mono unbalanced

3.81mm 4 position  
Phoenix type connector  
(stereo to mono unbalanced)

3.81mm two  
position Phoenix  
type connector for  
12volt 1.5A power  
input

Input level adjustment

Two screws for the  
KB100 bracket mount.



The speaker comes  
with one screw  
mount power supply  
with the eyebolt for  
securing power  
supply to the outlet.

## PLW74- CFM One balanced input

3.81mm 3 position  
Phoenix type connector  
(One balanced input)

3.81mm two  
position Phoenix  
type connector for  
12volt 1.5A  
power input

Input level adjustment

Two screws for the  
KB100 bracket  
mount.



The speaker comes  
with one screw mount  
power supply with the  
eyebolt for securing  
power supply to the  
outlet.

## PLW74- EFS Stereo to Mono unbalanced

3.81mm 4 position  
Phoenix type connector  
(stereo to mono unbalanced)

3.81mm two  
position Phoenix  
type connector for  
12volt 1.5A power  
input

Input level adjustment

Two screws for the  
KB100 bracket mount.



The speaker comes  
WITHOUT a power  
supply. User has  
an option for  
power source.

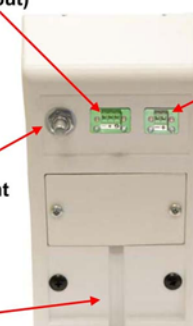
## PLW74- EFM One balanced input

3.81mm 3 position  
Phoenix type connector  
(One balanced input)

3.81mm two  
position Phoenix  
type connector for  
12volt 1.5A  
power input

Input level adjustment

Two screws for the  
KB100 bracket  
mount.



The speaker comes  
WITHOUT a power  
supply. User has  
an option for  
power source.

# MODEL OPTIONS

Model	Power Supply	Power Connection	Input Connection	Signal Input	Slave input/output connections
<b>PLW74-SM</b>	External 12Volt	2.5mm N jack	Two RCA phono jacks	Stereo to Mono unbalanced	Screw terminal block connectors
<b>PLW74-OM</b>	External 12Volt	2.5mm N jack	One RCA phono jack	One unbalanced Input	Screw terminal block connectors
<b>PLW74-RPS</b>	External 12Volt w/ Screw Terminal	3.81mm two position Phoenix type connector	Two RCA phono jacks	Stereo to Mono unbalanced	Screw terminal block connectors
<b>PLW74-RPM</b>	External 12Volt w/ Screw Terminal	3.81mm two position Phoenix type connector	One RCA phono jack	One unbalanced Input	Screw terminal block connectors
<b>PLW74-EPS</b>	12 Volt for external higher amperage multi unit supply (User option for power source)	3.81mm two position Phoenix type connector	Two RCA phono jacks	Stereo to Mono unbalanced	Screw terminal block connectors
<b>PLW74-EPM</b>	12 Volt for external higher amperage multi unit supply (User option for power source)	3.81mm two position Phoenix type connector	One RCA phono jack	One unbalanced Input	Screw terminal block connectors
<b>PLW74-JFS</b>	External 12Volt	2.5mm N jack	3.81mm four position Phoenix type connector	Stereo to Mono unbalanced	Screw terminal block connectors
<b>PLW74-JFM</b>	External 12Volt	2.5mm N jack	3.81mm three position Phoenix type connector	One balanced Input	Screw terminal block connectors
<b>PLW74-CFS</b>	External 12Volt w/ Screw Terminal	3.81mm two position Phoenix type connector	3.81mm four position Phoenix type connector	Stereo to Mono unbalanced	Screw terminal block connectors
<b>PLW74-CFM</b>	External 12Volt w/ Screw Terminal	3.81mm two position Phoenix type connector	3.81mm three position Phoenix type connector	One balanced Input	Screw terminal block connectors
<b>PLW74-EFS</b>	12 Volt for external higher amperage multi unit supply (User option for power source)	3.81mm two position Phoenix type connector	3.81mm three position Phoenix type connector	One balanced Input	Screw terminal block connectors
<b>PLW74-EFM</b>	12 Volt for external higher amperage multi unit supply (User option for power source)	3.81mm two position Phoenix type connector	3.81mm three position Phoenix type connector	One balanced Input	Screw terminal block connectors

## Architect's & Engineer's Specifications

The powered loudspeaker system shall be **AMK PLW74(-\_\_\_\_\_)**. The speaker shall feature a 15watt Class D design amplifier, with >75% efficiency within the speaker. The speaker driver assembly in the system shall be of the 3" paper cone woofer type and a 1" polyamide soft dome, post mounted, tweeter.

The transducer in the loudspeaker system shall be AMK CW77 for low frequency driver and MT13 for high frequency driver. The woofer shall have a 3.5. (100g) Barium Ferrite magnet. The two reproducer sections shall be coupled through a full crossover designed by AMK. The crossover frequency shall be at 100 and 4k Hz. The low frequency reproducer shall have 0.7" (18mm) voice coil and the high frequency reproducer shall have 0.51" (13mm) voice coil.

The system shall have a frequency response of 65 Hz- 22 kHz (+/- 5dB). The power handling shall be 10watts at 4 ohm impedance. The sensitivity shall be 83dB at 1watt / 1meter.. 95dB at max

The enclosure shall be constructed of high-impact ABS. The grille shall be completely powder coated for resistance against rusting, shall be bake-painted white or black.

The installation shall be done with omni directional bracket mount, **KB100(Wor B)**, provided by AMK.

The total weight of the unit system shall not exceed 2.0 lbs.

The loudspeaker system shall be AMK Innovations model **PLW74(-\_\_\_\_\_)**.

**Conforms to EIA Standards: RS-276-A, RS-278-B, RS-426-A**