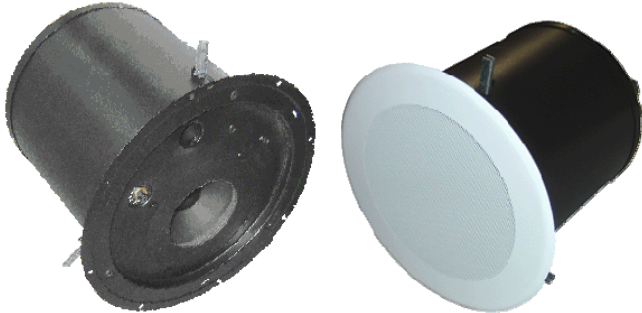




AMK Commercial Series

SW630A

6½" Subwoofer Loudspeaker Assembly



The SW 630A is a low distortion, subwoofer transducer assembly. The speaker combines high performance, power handling and a very smooth response.

The unit has been designed to enhance the bass performance of AMK SA 615A and other ceiling mounted speaker systems. Excellent dispersion, precise bandwidth, and a smooth frequency response make this the top choice for enhancing the low bass portion of audio in overhead commercial applications. The input select capability for the unit is mounted in the front of the speaker assembly so that the installers can adjust for acoustical bass response.

There is a wide ranges of the application for this unit, especially in restaurants, hotels, casinos, boardrooms and upscale retail stores.

Features:

- * All metal construction, including Baffle
- * Designed to be interchangeable with AMK tile bridges and baffles
- * High Performance 6½" Low Frequency Driver
- * **UL Listed** PK-213-6QM Enclosure

Specifications

| | |
|---|----------------------------------|
| Frequency Response | 45 Hz - 300 kHz |
| Input Selector Switch | 30W, 20W, 10W, 5W, off and 4 ohm |
| Power Handling at 8 ohms | 30W |
| Sound Pressure level (1w/1m) | 81dB |
| Voice-coil diameter | 1" |
| Average Beamwidth @ 2 kHz | Semi Hemispheric |
| Magnet Weight | 13 oz |
| Magnet Material | Barium Ferrite |
| Woofer Cone | Polypropylene |
| Surround Material | Rubber roll |
| Depth | 11.75" |
| Diameter of the Enclosure | 9.25" |
| Diameter of the Grille | 12.75" |
| Enclosure Mounting | Metal Swivel Clamp |
| Net Weight (Grille, Back Enclosure, and Loudspeaker) | 10.0 lbs |
| Shipping Weight (pair) | 31.4 lbs |

Innovative Features

Each system includes a renowned AMK Coaxial loudspeaker like those already installed in hundreds of locations

Easy to install

- All-metal swivel mounting system allows standard installation of speakers without having to align the enclosure to the tile bridge
- This installation procedure is quick and unique to the industry
- The simplicity of our one-wire connection aids in speedy installation
- Architecturally pleasing white perforated metal grille that uses a unique metal clasp system for a "no visible hardware" finished look with ease of "snap on" installation

Sound

- The Plenum Compatible Back Enclosure is designed to maximize the performance of the speaker mounted inside
- Front accessible switch allows selection from various transformer wattage taps to control SPL or direct to 8ohms

Convenience

- Ease of purchasing with "one part number" convenience
- No more "which goes with what" conventional product field assembly of separately ordered parts

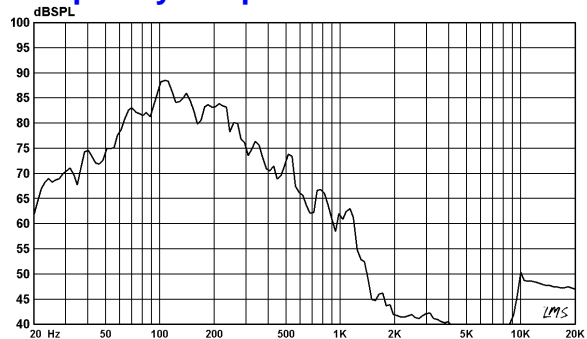
Safety

- The use of all-metal attachment parts makes for an overall safer installation
- All-metal swivel prevents breakage of swivel during installation
- All-metal swivel mounting system is not easily compromised by fire

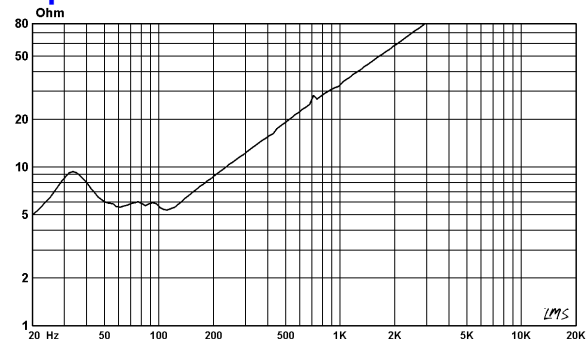
Custom Manufacturing Options

- The option of custom depth back enclosures are available
- Various different transformers are available
(Please allow some lead time for custom manufacturing)

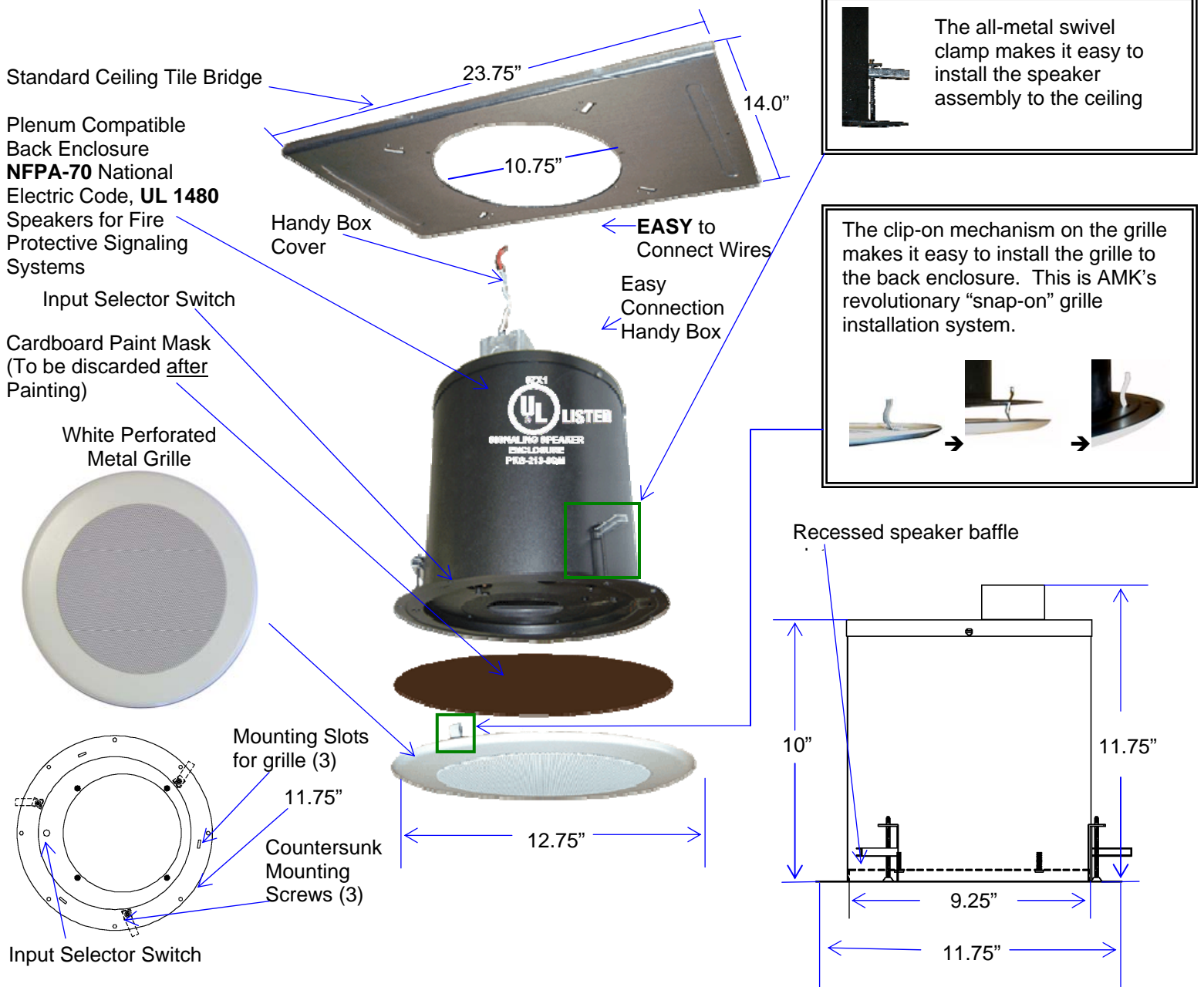
Frequency Response



Impedance Curve



SW 630A ILLUSTRATION



Architects' & Engineers' Specifications

The loudspeaker system shall be **AMK SW 630A**. The speaker assembly in the system shall be of a 6.5" woofer of polypropylene, with a rubber roll surround. The loudspeaker system shall have a white metal round grille that screws into the rim of the mounting enclosure. The system shall have an input selector switch that shall have sections of 30W, 20W, 10W, 5W, (in 70.7V system) off, and 4 ohm positions. The power handling shall be 30watts at 4 ohm impedance.

The unit in the loudspeaker system shall be AMK HK605 loudspeaker. The voice coil of loudspeaker unit shall be 1" in diameter. The magnet weight of the loudspeaker shall be 13oz (369g). The unit shall have a frequency response of 45 Hz- 300 kHz (+/- 8dB). The sensitivity shall be 81dB at 1 watt / 1meter. The enclosure unit shall be plenum compatible. The rim diameter shall be 11.75". The enclosure diameter shall be 9.25". The depth of the enclosure shall not exceed 11.75" The system includes a handy box, with cover, for wire enclosure, bonded to the back of the unit. The system shall include a tile bridge. The system shall have a metal strap for attachment to the structure for seismic protection. The total weight of the unit system shall not exceed 10.0 lbs.

The loudspeaker system shall be AMK Innovations model **SW 630A**.

Conforms to EIA Standards: RS-276-A, RS-278-B, RS-426-A