



PCS615-W

Self Amplified Wall Mount Speaker System



The AMK PCS615-W is a self amplified cabinet speaker system. It features a 30 watt Class D digital design amplifier, with > 75% efficiency and one of AMK's world class coaxial drivers. The CX601 speaker, a full range, low distortion, transducer is one of only a few that, though designed for overhead applications in the commercial sound industry, produces audio quality that is equally at home in the demanding world of extended sound fields and recording studios as well.

Excellent dispersion, wide bandwidth, and a smooth frequency response make this the top choice for cabinet as well as overhead commercial applications.

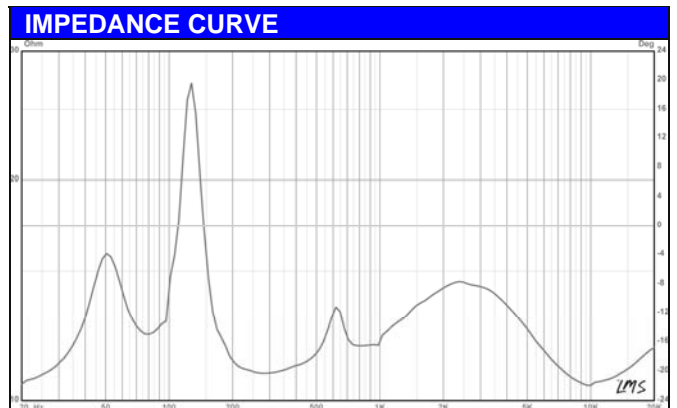
There are wide ranges of applications of this unit including extending the sound field to where ceiling speakers are not appropriate or desired. These applications also include educational markets and corporate boardrooms where direct input of the signal from a is desired i.e. projector or mobile audio source.

| Transducer Specifications | |
|---------------------------|--------------------------|
| Frequency Response | 65 Hz - 20 kHz |
| Voice-coil diameter | 1" |
| Average Beamwidth @ 2 kHz | 144 deg. |
| Magnet Weight | 13 oz |
| Magnet Material | Barium Ferrite |
| Tweeter | 13mm Polyamide Soft Dome |
| Woofer Cone | Polypropylene |
| Surround Material | Inverted Rubber |
| Crossover Frequency | 6.3 kHz |

| Enclosure Specifications | |
|--|---|
| (Enclosure listed under UL 94) | |
| Enclosure | Acrylonitrile Butadiene Styrene (ABS), White |
| Height | 12" |
| Width | 9" |
| Depth | 7" |
| Bracket | Metal U bracket with screw knob on the side and electro welded insert for omni mount on rear plane. |
| Grille | Perforated Metal |

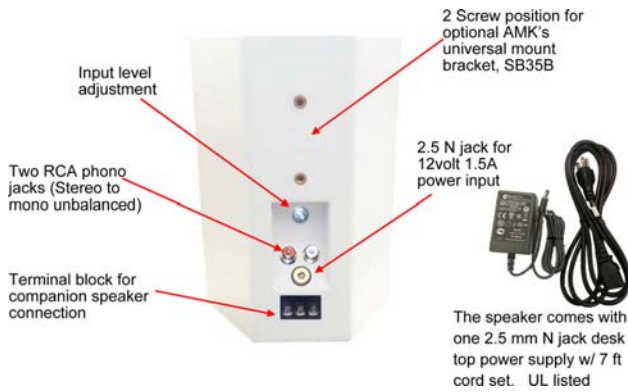
| Amplifier Specifications | |
|---------------------------|--|
| Amplification | 15 watt Class D design amplifier |
| Amplifier Efficiency | > 75% |
| Total Harmonic Distortion | < 0.2% |
| Signal to Noise Ratio | >95dB |
| Protection | Short circuit to supply and ground, as well as under current |
| Controls | Input potentiometer level adjustment |

| FEATURES |
|---|
| <ul style="list-style-type: none"> * Plastic Enclosure Type with perforated metal grill * High performance 6½" coaxial loudspeaker with wide dispersion * Very high performance 15 watt digital amplifier * Wide choice of input and control configurations |
| <p>Speaker ships with U bracket, omni directional bracket is available at nominal amount.</p> |

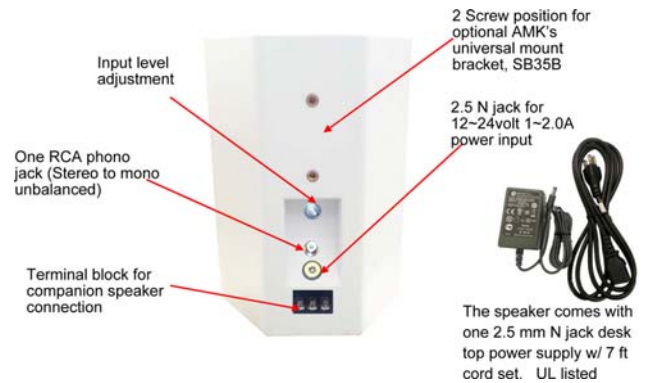


MODEL OPTION CONFIGURATIONS

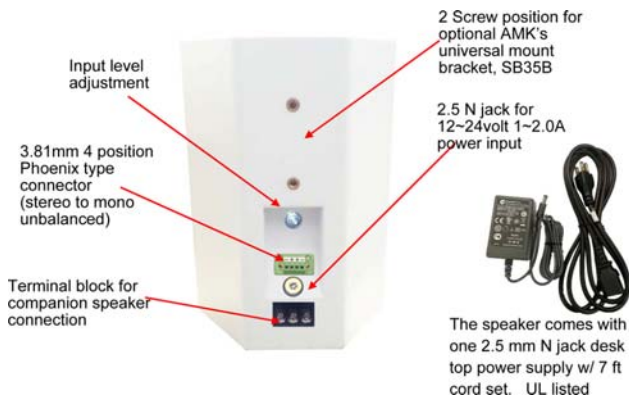
PCS615-SM-W Stereo to Mono unbalanced



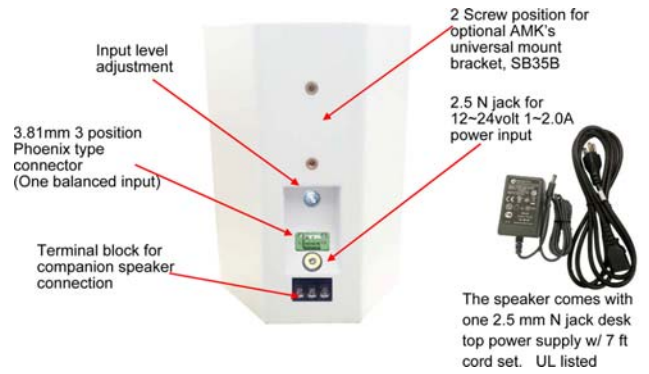
PCS615-OM-W One unbalanced input



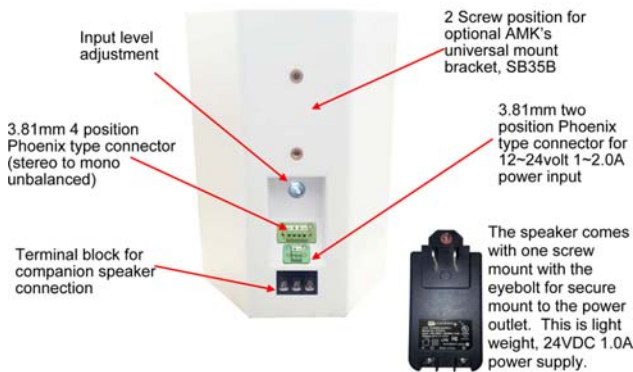
PCS615-JFS-W Stereo to Mono unbalanced



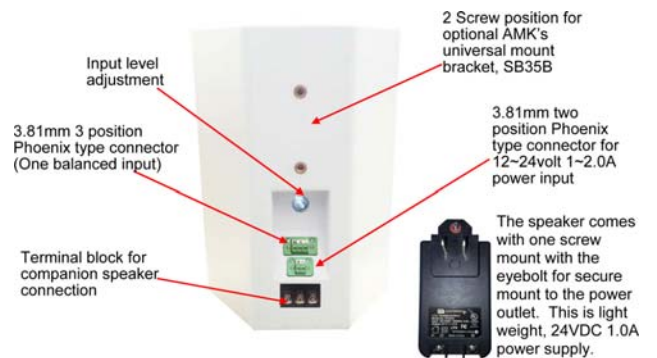
PCS615-JFM-W One balanced input



PCS615- CFS-W Stereo to Mono unbalanced

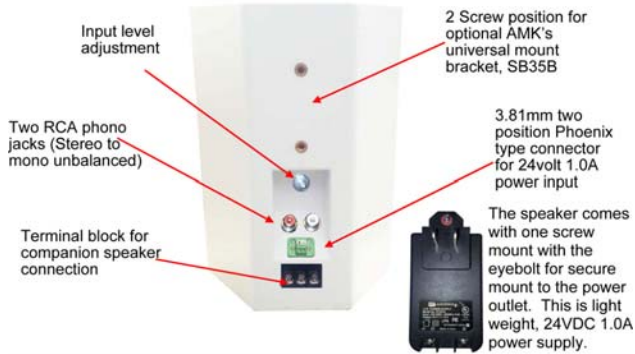


PCS615- CFM-W One balanced input

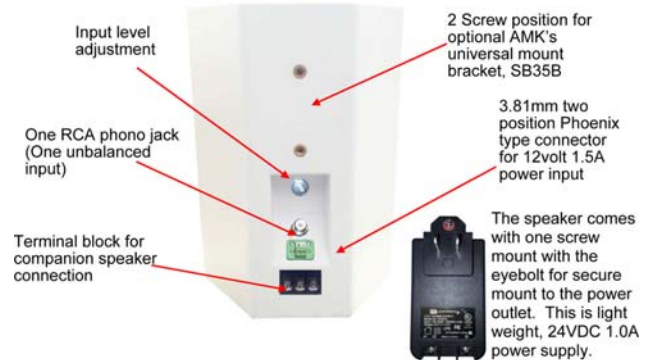


MODEL OPTION CONFIGURATIONS

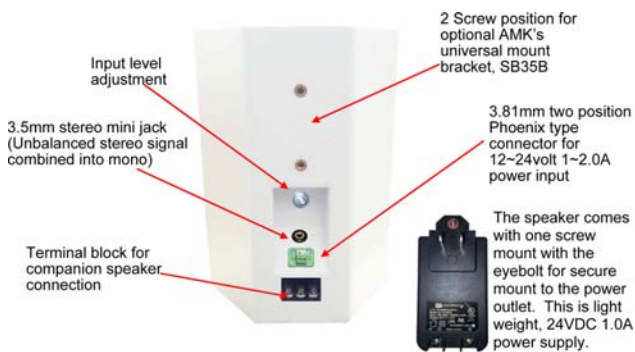
PCS615-RPS-W Stereo to Mono unbalanced



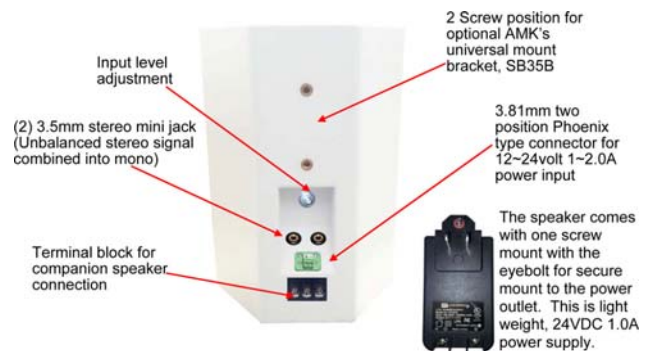
PCS615-RPM-W One unbalanced input



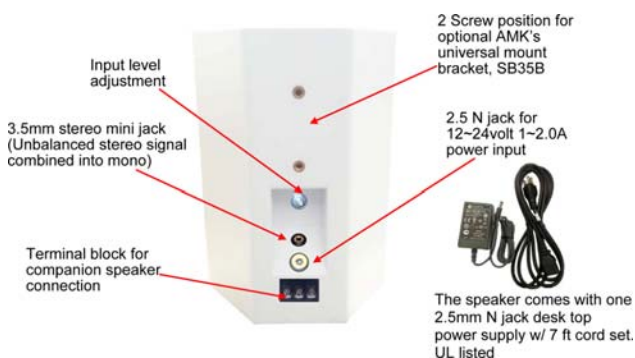
PCS615-MD-W Stereo to Mono unbalanced



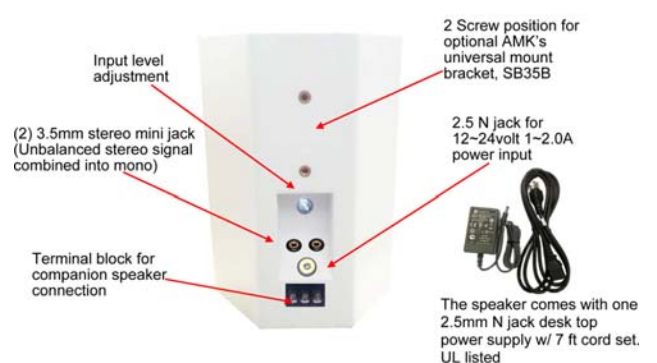
PCS615-MD2-W One unbalanced input



PCS615-MDL-W Stereo to Mono unbalanced



PCS615-MD2L-W One unbalanced input



MODEL OPTIONS

| Model | Power Supply | Power Connection | Input Connection | Signal Input | Slave input/output connections |
|----------------------|-----------------------------------|--|--|---------------------------|---------------------------------|
| PCS615-SM-W | External 24Volt / Desktop | 2.5mm N jack | Two RCA phono jacks | Stereo to Mono unbalanced | Screw terminal block connectors |
| PCS615-OM-W | External 24Volt / Desktop | 2.5mm N jack | One RCA phono jack | One unbalanced Input | Screw terminal block connectors |
| PCS615-JFS-W | External 24Volt / Desktop | 2.5mm N jack | 3.81mm four position Phoenix type connector | Stereo to Mono unbalanced | Screw terminal block connectors |
| PCS615-JFM-W | External 24Volt / Desktop | 2.5mm N jack | 3.81mm three position Phoenix type connector | One balanced Input | Screw terminal block connectors |
| PCS615-CFS-W | External 24Volt w/ Screw Terminal | 3.81mm two position Phoenix type connector | 3.81mm four position Phoenix type connector | Stereo to Mono unbalanced | Screw terminal block connectors |
| PCS615-CFM-W | External 24Volt w/ Screw Terminal | 3.81mm two position Phoenix type connector | 3.81mm three position Phoenix type connector | One balanced Input | Screw terminal block connectors |
| PCS615-RPS-W | External 24Volt w/ Screw Terminal | 3.81mm two position Phoenix type connector | Two RCA phono jacks | Stereo to Mono unbalanced | Screw terminal block connectors |
| PCS615-RPM-W | External 24Volt w/ Screw Terminal | 3.81mm two position Phoenix type connector | One RCA phono jack | One unbalanced Input | Screw terminal block connectors |
| PCS615-MD-W | External 24Volt w/ Screw Terminal | 3.81mm two position Phoenix type connector | 3.5mm stereo to mono minijack | Stereo to Mono unbalanced | Screw terminal block connectors |
| PCS615-MD2-W | External 24Volt w/ Screw Terminal | 3.81mm two position Phoenix type connector | (2) 3.5mm stereo to mono minijack | Stereo to Mono unbalanced | Screw terminal block connectors |
| PCS615-MDL-W | External 24Volt / Desktop | 3.81mm two position Phoenix type connector | 3.5mm stereo to mono minijack | Stereo to Mono unbalanced | Screw terminal block connectors |
| PCS615-MD2L-W | External 24Volt / Desktop | 3.81mm two position Phoenix type connector | (2) 3.5mm stereo to mono minijack | Stereo to Mono unbalanced | Screw terminal block connectors |

Architect's & Engineer's Specifications

The powered loudspeaker system shall be **AMK PCS615(-_____)**. The speaker shall feature a 30 watt Class D design amplifier, with >75% efficiency within the speaker. The speaker driver assembly in the system shall be of the coaxial type with an 6.5" woofer of polypropylene, an inverted rubber surround, and a 1" polyamide soft dome, post mounted, tweeter.

The transducer in the loudspeaker system shall be AMK CX 602 coaxial loudspeaker. The woofer shall have a 13 oz. (369g) Barium Ferrite magnet. The two reproducer sections shall be coupled through a built-in capacitor bypass crossover. The crossover frequency shall be at 5.0 kHz. The low frequency reproducer shall have 1" (25.4mm) voice coil and the high frequency reproducer shall have 0.51" (13mm) voice coil.

The system shall have a frequency response of 65 Hz- 20 kHz (+/- 5dB). The power handling shall be 25watts at 8 ohm impedance. The sensitivity shall be 91dB at 1watt / 1meter.

The enclosure shall be constructed of high-impact ABS. The grille shall be completely powder coated for resistance against rusting, shall be bake-painted black.

The installation shall be done with U bracket provided with the cabinet with plastic knob screw on the side of the cabinet. Optional AMK SB-35 multi directional bracket may be used for installation as well.

The total weight of the unit system shall not exceed 7.0 lbs.

The loudspeaker system shall be AMK Innovations model **PCS615(-_____)**.

Conforms to EIA Standards: RS-276-A, RS-278-B, RS-426-A